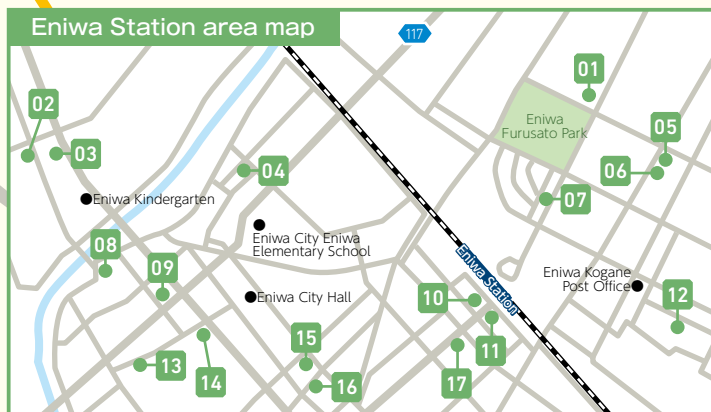


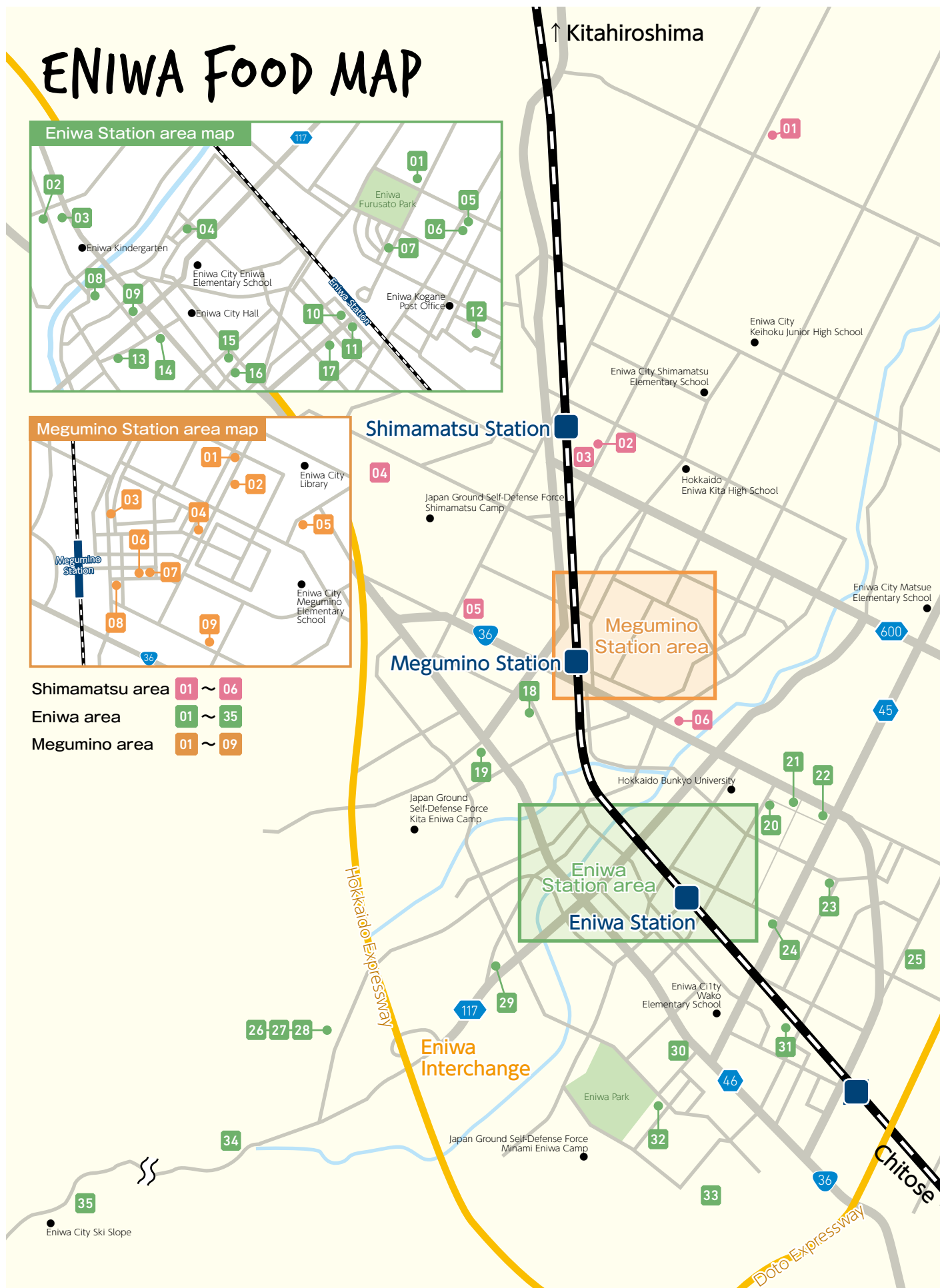
ENIWA Food MAP

Enjoy delicious Eniwa

ENIWA FOOD MAP



Shimamatsu area 01 ~ 06
 Eniwa area 01 ~ 35
 Megumino area 01 ~ 09



Hokkaido Eniwa City Ministry of Economic Affairs, Tourism
 Department of Flowers and Nature
 1, Kyomachi, Eniwa, 061-1498 MAIL:hanatomidori@city.eniwa.hokkaido.jp
 issued February, 2019

ENIWA AREA

01 Café Restaurant Kizuna

Cafe Sweets Bread Ice Noodle



Japanese style parfait created by the owner who trained in Kyoto.

The most popular dish on the menu is "Yatsuhashi Parfait" for its full flavor and Uji-green tea essence. It is best matched with a tasty cup of specialty coffee made by the owner, who has won the title of "Best Latte Art Creator in Japan". The menu also includes a variety of other dishes that use local ingredients produced in Eniwa and Hokkaido.

Opening hours: 11:30am-9:00pm (Last Order 8:00pm), Sundays 11:30am-4:00pm (Last Order 3:00pm) Closed: Tuesdays Address: 4-3-11 Kogane-chuo, Eniwa (+81)0123-34-2218 Parking space: For 6 vehicles

02 Gyoho-an

Cafe Sweets Bread Ice Noodle



Handmade soba noodles made with carefully chosen ingredients.

Soba noodles here are made with Hokkaido buckwheat and served in soup made with four different kinds of dried bonito as well as soy sauce produced by a long-established factory. The tatami-floored seating area is quite relaxing and adds to the Japanese atmosphere.

Opening hours: 11:00am-2:00pm Closed: Second Thursday every month Address: 3-3-3 Omachi, Eniwa (+81)0123-34-1338 Parking space: For 3 vehicles

03 Daishin

Cafe Sweets Bread Ice Noodle



This authentic Chinese restaurant, with over 80 menu dishes, is located in Eniwa!

There is a large selection of dishes at Daishin, including their original "Daishin-men" various kinds of noodles, rice dishes, and a la carte. Their fried chicken, fried rice and dumplings have many fans. Come and experience authentic Chinese.

Opening hours: 11:00am-2:30pm, 5:00pm-8:00pm Closed: Thursdays Address: 3-2-3 Omachi, Eniwa (+81)0123-32-5320 Parking space: For 25 vehicles

04 Handmade Soba Noodles Matsuki

Cafe Sweets Bread Ice Noodle



Enjoy the unique texture of handmade soba noodles using Horokanai buckwheat.

The thin soba noodles here may look a little uneven, but it is the true sign that they are 100% handmade. Soba noodles using Horokanai buckwheat has a pleasant chewy texture. Add some crispy tempura on top and it would make the perfect bowl. Along with their delicious soba, they also serve udon noodles too.

Opening hours: 11:00am-2:00pm, 5:00pm-8:00pm Closed: Wednesdays Address: 1-15-4 Fukuzumi, Eniwa (+81)0123-34-3480 Parking space: For 3 vehicles

05 Gelateria e Bar Gigi

Cafe Sweets Bread Ice Noodle



Exquisite gelato using fresh milk of pastured cattle.

The milk used here is from the first farm which got an official certificate for actively promoting pasturing in Japan. The most popular gelato, Fresh Milk from Mizumoto Farm, gives the refreshing taste of rich milk. They also serve delicious panino using Italian prosciutto during lunch time.

Opening hours: Weekdays 11:00am-5:30pm, Saturdays, Sundays, National Holidays 11:00am-6:00pm Closed: Mondays, second Tuesdays every month Address: 2-19-8 Kogane-minami, Eniwa (+81)0123-21-9915 Parking space: For 30 vehicles

06 pizzeria e trattoria CERVO

Cafe Sweets Bread Ice Noodle



Authentic Italian from Naples in Eniwa.

The owner chef trained himself in Italy and opened this restaurant to serve Italian local food and wine. His traditional pizzas and fresh seafood dishes use Naples vegetables specially grown by farms in Eniwa.

Opening hours: [Lunch] Weekdays 11:30am-2:30pm, Saturdays, Sundays, National Holidays 11:00am-2:30pm, [Dinner] 5:30pm-9:00pm Closed: Mondays, second Tuesdays every month, the next day when it falls on a National Holiday. Address: 2-19-7 Kogane-minami, Eniwa (+81)0123-34-6301 Parking space: For 30 vehicles

07 Yotsuba no Clover

Cafe Sweets Bread Ice Noodle



The sweets shop that delivers happiness with its sweets.

There is a wide selection of sweets here, including Swiss rolls, puddings, and cookies. They always offer original, fresh sweets that are meticulously designed to be both delicious and artistic.

Opening hours: 10:00am-6:30pm Closed: Wednesdays Address: 1-13-3 Kogane-chuo, Eniwa (+81)0123-33-9608 Parking space: For 4 vehicles

08 Handmade Soba Noodle Shikunro Main Store

Cafe Sweets Bread Ice Noodle



Fresh country-style handmade soba noodles.

The soba noodles here are relatively thick and short, giving you a nice and firm texture along with the rich aroma of buckwheat. The most popular menu item is "Tenzaru", a soba dish set that includes a generous amount of seasonal vegetables tempura.

Opening hours: Wednesday-Sunday 11:00am-7:00pm, Monday 11:00am-2:00pm (closed when sold out) Closed: Tuesdays Address: 53 Motomachi, Eniwa (+81)0123-32-3059 Parking space: For 13 vehicles

09 Café Hareruya

Cafe Sweets Bread Ice Noodle



A chef's special, casual and home-style cooking.

One day, it can be a buffet style lunch with a variety of vegetables and sweets. On another day, dishes are served with freshly homemade bread. The homely, relaxing atmosphere here feels so good.

Opening hours: 11:30am-3:00pm
Closed: Mondays, Saturdays, Sundays, National Holidays
Address: 17 Motomachi, Eniwa
(+81)0123-21-9327 Parking space: For 4 vehicles

10 Penguin Bakery Café

Cafe Sweets Bread Ice Noodle



The secret is the special recipe that goes into the bread that you can't get enough of.

Their bread is said to be something you cannot get enough of. It is because they use carefully chosen Hokkaido wheat and bake their bread with a special recipe to enhance its delicious taste, aroma, and texture. They also offer some cafe space to relax in.

Opening hours: Weekdays 9:00am-7:00pm, Saturdays, Sundays, National Holidays 9:00am-6:00pm Closed: from December 31st to January 2nd Address: Eniwa Izarie 1F, 2-1, Aiomachi, Eniwa (+81)0123-35-4000
Parking space: For 24 vehicles (Free for 30 minutes. Minimum 500yen purchase required.)

11 Shakeyaki Honpo Eniwa Ekimae shop

Cafe Sweets Bread Ice Noodle



The cute and tasty shake-yaki come in many flavors!

Shake-yaki sweets are served in a variety of flavors, including red bean jam using Hokkaido beans, custard cream, and even spicy salmon. They also have specials for each season.

Opening hours: 11:00am-7:00pm Closed: Open all year round Address: 14 Aiomachi, Eniwa (+81)0123-34-7666 Parking space: For 2 vehicles

12 Kyara Liaison

Cafe Sweets Bread Ice Noodle



Delicious and safe bread for everyone.

Their bread uses 100% Hokkaido flour and are additive-free, yet are sold for reasonable prices. The popular breads are "Shiopan" and "Takana no Oyaki", as well as natural yeast bread which is sold only in limited numbers.

Opening hours: 10:00am-5:00pm Closed: Mondays, first and third Sundays every month
Address: 1-17-22 Kogane-minami, Eniwa (+81)0123-25-3339 Parking space: For 3 vehicles

13 café&IT Fiesta

Cafe Sweets Bread Ice Noodle



The homemade café enjoyed by everyone.

This café specializes in coffee, sweets, Kawarabana and an assortment alcoholic drinks. Each cup of coffee is carefully brewed, using home-roasted beans. Customers here can enjoy pictures of the world's spectacular views projected in the room.

Opening hours: 11:00am-10:00pm (Last Order 9:00pm)
Closed: Thursdays, One Sunday every month
Address: 104-2, Izarimachi, Eniwa
(+81)0123-25-6970 Parking space: For 7 vehicles

14 Eniwa Oton Shokudo

Cafe Sweets Bread Ice Noodle



Good-old style ramen served in a retro atmosphere.

This is a casual ramen shop that has a tatami space. They serve ramen, rice dishes and some set menus. The most popular dish here is "Kobato Ramen", where the noodles are served in a clear soy sauce soup based on chicken broth. It even has a customer friendly price of 600 yen including tax.

Opening hours: Weekdays 11:00am-3:00pm, Saturdays, Sundays 11:00am-8:00pm Closed: Tuesdays Address: 13 Izarimachi, Eniwa (+81)0123-32-2251 Parking space: For 8 vehicles

15 Cafe&Dining Bar Lin

Cafe Sweets Bread Ice Noodle



The café dining suitable for many occasions. People get together and get to know each other here.

It is a café known for its original plate lunch, Hokkaido game meat dishes, and wide range of menu items. This place is popular for people to gather and get to know each other through events such as bridal parties and variety of workshops.

Opening hours: Tuesdays-Saturdays 10:00am-4:00pm, 6:00pm-10:00pm, Sundays 10:00am-6:00pm Closed: Mondays (and 4 random days a month) Address: 1-2 Sakaemachi, Eniwa (+81)090-8270-8181 Parking space: For 5 vehicles

16 Handicraft Café Egg star

Cafe Sweets Bread Ice Noodle



This café is located in the corner of a bar district and has many cute things on display.

Not only does this place serve coffee, cake, and pasta, it also exhibits and sells a variety of handicrafts. You can buy stuffed toys hand-crafted by artists, like an exclusive Momo Taro. Enjoy spending a relaxing time here surrounded by cute things.

Opening hours: 8:00am-5:00pm Closed: Thursdays
Address: 33 Sakaemachi, Eniwa
(+81)0123-25-3551 Parking space: For 3 vehicles

17 Mojo Hand

Cafe Sweets Bread Ice Noodle



Visitors can dine in this café while admiring a retro interior filled with good music.

The café has many kinds of menu dishes including a fluffy rice omelet and pasta. Their butter-rich French toast is sweetened with the aroma of hot cinnamon and can be indulged with a cup of hot coffee. Regular live performances can also be enjoyed here.

Opening hours: 11:00am-11:00pm, [Lunch] 12:00pm-2:00pm Closed: closes irregularly
Address: 142 Aiomachi, Eniwa (+81)0123-33-4447
Parking space: For 1 vehicle

18 Kokoro Bakery Smile

Cafe Sweets **Bread** Ice Noodle



**Everyone is addicted to the taste!
This little bakery gathers attention.**

It is a very popular bakery and many of their breads sell out in the morning. The butter and flour they use are both made in Hokkaido. Once you try it, you are going to get hooked with the delicious texture and the smell of pure butter from their bread.

Opening hours: 9:00am-6:00pm (closed when sold out) Closed: Sundays, second and fourth Mondays every month Address: 3-11-19 Hakuyochi, Eniwa (+81)0123-32-1630 Parking space: For 2 vehicles

19 ICHIE Flower&Sweets

Cafe Sweets Bread **Ice** Noodle



The sweets shop surrounded by flowers.

The chef of this shop, who has worked at one of the finest eating establishments in France, now makes exquisite sweets using fresh ingredients produced in Eniwa. You can take out a cake and accompany it with some flowers as a present for a loved one!

Opening hours: 10:00am-7:00pm Closed: Tuesdays Address: 3-1-6 Kashiwagicho, Eniwa (+81)0120-022-412 Parking space: For 10 vehicles

20 Fujinomiya Chaen

Cafe Sweets Bread Ice Noodle



This Japanese style café, that offers a tea course, is run by an owner originally from Shizuoka.

Their Japanese tea course includes homemade waffles, Yokan (sweet bean paste jelly), and three cups of Japanese tea. The tea leaves are directly sent from a farm located at the foot of Mt. Fuji. Used tea leaves can also be tasted with some miso.

Opening hours: [Shop] 10:00am-6:00pm, [Café] 11:00am- (Last Order 5:00pm) Closed: Tuesdays Address: 6-9-5 Kogane-minami, Eniwa (+81)0123-31-1800 Parking space: For 8 vehicles

21 Ramen Keigakubo

Cafe Sweets Bread Ice **Noodle**



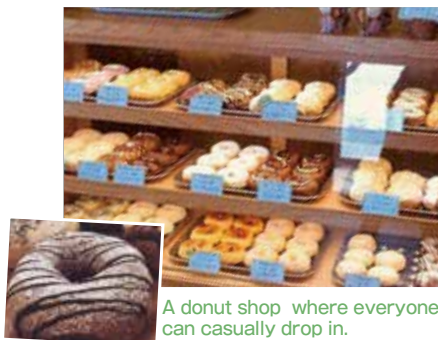
Try the authentic ramen with exclusive noodles and soup.

The most popular ramen here is "Jukusei Awase-miso Ramen", a ramen in a soup made with two different kinds of miso blended in a pork broth. The noodles are freshly made each morning and goes through a three-stage aging process to enhance the flavor.

Opening hours: 11:00am-9:00pm Closed: Open all year round Address: 6-10-5 Kogane-minami, Eniwa (+81)0123-25-5502 Parking space: For 50 vehicles

22 Donut Chaya Honwaka

Cafe Sweets Bread Ice Noodle



A donut shop where everyone can casually drop in.

This casual donut shop is much like a candy store where even children can come in by themselves. Their doughnuts use Hokkaido flour, Haruyokoi, and pumpkins produced in Eniwa. Their prices are reasonable, so everyone can feel at ease as they enjoy their donuts.

Opening hours: 11:00am-5:00pm (Closed when sold out) Closed: Closed irregularly Address: 7-18-4 Kogane-minami, Eniwa (+81)0123-25-5346 Parking space: For 5 vehicles

23 Tofuya Mameteppo

Cafe **Sweets** Bread **Ice** Noodle



We offer freshly made delicious products and a smile.

There is a wide selection of products in this shop, including tofu, deep fried products, ready-to-eat dishes, and sweets too. The soft serve ice cream made from silk tofu tastes great, containing all the good flavors of soy beans. There are also some seasonal products and daily specials.

Opening hours: 10:00am-5:00pm Closed: Open all year round Address: 20-1-18 Toiso, Eniwa (+81)0123-33-5015 Parking space: For 20 vehicles

24 Fresh Restaurant & Café Re:Leaf

Cafe Sweets Bread Ice Noodle



This restaurant serves organically produced vegetables grown in a water culture factory.

Their dishes use vegetables produced in their own water culture factory on the first floor as well as some products grown locally in Hokkaido. Customers can enjoy a fresh salad buffet together with a main dish of their choice.

Opening hours: 11:00am-3:00pm (Last Order 2:30pm) Closed: Wednesdays Address: 1-26-10 Kogane-minami, Eniwa (+81)0123-25-3788 Parking space: For 22 vehicles

25 Grace Court (Murakami Farm)

Cafe Sweets Bread **Ice** Noodle



Delicious soft serve ice cream made from freshly squeezed milk!

This soft serve ice cream shop, run by a dairy farm, raises their cattle with carefully chosen feed and special care. The milk produced from these cows are used to make fresh, top-grade ice cream.

Opening hours: 10:00am-6:00pm (from beginning of April to the end of November) Closed: Open every day during opening period (closed from the end of November to the beginning of April) Address: 156 Toiso, Eniwa (+81)0123-32-5093 Parking space: For 50 vehicles

26 Tomato no Mori Café Korokuru

Cafe Sweets Bread **Ice** Noodle



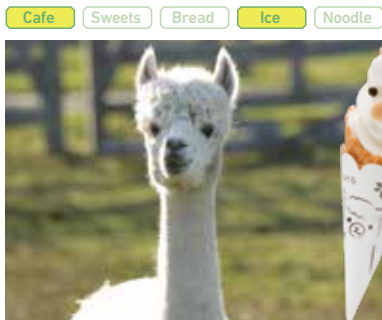
Slightly red tomato soft serve ice cream

You can try tomato soft serve ice cream at this café in the Tomato Forest at Ecorin Village. It is made with tomatoes produced right here. This exclusive creamy soft serve ice cream has a delicious hint of tomato.

Opening hours: 10:00am~5:00pm (Only Green Season Opens) 10:00am-4:00pm (From September 17th to October 14th) Closed: Open every day during the opening period Address: 281-1 Makiba, Eniwa (+81)0123-39-2826 Parking space: For 300 vehicles

27 Makiba Café (Ecorin Village)

Cafe Sweets Bread Ice Noodle



Try the Ecorin Village specialty!
The soft serve ice cream shaped like an alpaca's face.

You can find it just next to Midori no Makiba in Ecorin Village. Take a break from your walk and try this alpaca soft serve ice cream! Visitors can also enjoy hot dogs and other snacks here.

Opening hours: 9:30am-4:00pm (Only Green Season opens) Closed: Open every day during the opening period Address: 277-4 Makiba, Eniwa (+81)0123-34-7800 Parking space: For 300 vehicles

28 Rakudaken (Ecorin Village)

Cafe Sweets Bread Ice Noodle



Come and taste fresh pasta and hearth-baked pizza at an Italian farm restaurant.

This Italian farm restaurant located in Ecorin Village offers fresh pasta made from Hokkaido flour in their own factory. They also have some dishes using pork produced in Ecorin Village.

Opening hours: 10:00am-6:00pm (Last Order 5:30pm) Closed: Open all year round Address: 281-2 Makiba, Eniwa (+81)0123-39-2821 Parking space: For 300 vehicles

29 Café de Vale

Cafe Sweets Bread Ice Noodle



Enjoy this relaxing space with wooden interior and furniture.

Visitors can relax in this comfortable space and enjoy a delicious acai berry parfait, or even anti-aging dishes, while appreciating the nice scent of wood. The weekly lunch plate, which comes with a dessert and drink, is most recommended.

Opening hours: 11:00am-6:00pm Closed: Mondays, first, third, fifth Sundays every month Address: 2-11-8 Misakino, Eniwa (+81)090-6696-7989 Parking space: For 5 vehicles

30 Café Fukuza

Cafe Sweets Bread Ice Noodle



A space filled with green, where time flows slowly.

The owner of this café made a lot of effort to choosing the right furniture, including importing some from Bali, as well as using the right ingredients for their dishes. Not to forget about their gourmet coffee beans. The pasta plate, including a drink and salad, tastes delicious. There are also some handmade goods and earthenware made available by local artists.

Opening hours: 10:00am-6:00pm, [Lunch] 11:00am-3:00pm Closed: First Mondays every month, the end and the beginning of a year Address: 6-12 Enami, Eniwa (+81)0123-32-0293 Parking space: For 13 vehicles

31 Amai Aozora

Cafe Sweets Bread Ice Noodle



Home-roasted coffee and home baked sweets.

Their home baked sweets uses local ingredients and have many fans. The haskap cookie, using home grown haskap berries, is the most popular item since the shop's opening. It goes really well with their home-roasted coffee.

Opening hours: 10:00am-6:00pm Closed: Tuesdays Address: 5-20-10 Wako, Eniwa (+81)0123-25-8844

32 Baker's Terrace 689

Cafe Sweets Bread Ice Noodle



Lots of bread and sweets! Which one is your favorite?

They serve various kinds of bread and sweets using Hokkaido ingredients. Several kinds of parfaits are also available, generously made with layers of fruits, cream, and sponge cake. Eat in space is available.

Opening hours: 9:30am-6:00pm Closed: Sundays, Mondays Address: 6-89 Enami, Eniwa (+81)0123-33-1970 Parking space: For 5 vehicles

33 Milk no Atelier

Cafe Sweets Bread Ice Noodle



An Italian restaurant that serves fresh cheese.

This Italian restaurant offers freshly produced cheese and a great view of the farm. Many customers order pasta and pizza using mozzarella made each morning from freshly squeezed milk. You can buy some cheese and sausages to take home as well.

Opening hours: 11:00am-4:00pm (Last Order 3:30pm) Closed: Wednesdays Address: 28 Enami, Eniwa (+81)0123-39-2546 Parking space: For 30 vehicles

34 Sweet Grass

Cafe Sweets Bread Ice Noodle



Feel in season at the restaurant in a forest.

This restaurant serves dishes using locally produced fresh ingredients. The popular menu items are Fluffy Omelet and Rice, Poke Steak, and Handmade Cake. The beautiful view of the garden adds to the calm atmosphere.

Opening hours: Weekdays 11:00am-5:00pm (Last Order 4:00pm) Closed: The end and the beginning of a year Address: 20-1 Banjiri, Eniwa (+81)0123-32-0418 Parking space: For 50 vehicles

35 Café Kaede

Cafe Sweets Bread Ice Noodle



The café in the woods and flowers offers tasty coffee and Japanese general goods

The garden in front of the shop has a different face each season. Wild grass and cherry blossoms in the spring, color flowers in the summer, and bright leaves and wild birds in the fall. Enjoy the garden while relaxing with a hot coffee and handmade sweets. Some Japanese general goods are also available.

Opening hours: 11:00am-4:00pm Closed: Mondays, Tuesdays, Wednesdays, Thursdays Address: 321-12 Banjiri, Eniwa (+81)080-2384-4176 Parking space: For 5 vehicles



MEGUMINO AREA

01 Peacock

Cafe Sweets Bread Ice Noodle



Opens early in the morning!
The bakery loved by everyone.

Their at the tip, and deliciously chewy inside. It is no wonder why it has so many fans. The refreshing taste of their soft serve ice cream is loved by everyone of all ages. Eat-in space is also available.

Opening hours: 6:30am-7:00pm Closed: Wednesdays
Address: 6-21-5 Megumino-nishi, Eniwa (+81)0123-37-1361 Parking space: For 5 vehicles

02 Cake House Pom

Cafe Sweets Bread Ice Noodle



Cake made with fresh Hokkaido ingredients in an original recipe used since opening.

This handmade cake shop uses Hokkaido ingredients to produce a gentle taste that has not changed since the store's opening. You can order various kinds of decorated and delicious hearty cakes.

Opening hours: 9:30am-6:00pm Closed: Mondays, First, second, fifth Tuesdays every month Address: 5-1-8 Megumino-nishi, Eniwa (+81)0123-36-3767 Parking space: For 3 vehicles

03 Café Orange

Cafe Sweets Bread Ice Noodle



A good-old fashioned café that offers generous portions at reasonable prices!

This café feels so cozy that you might feel like at home. All the dishes are generous and reasonably priced. For example, the gratin comes with toast and a salad. Their menu also includes noodles, curry, and set dishes.

Opening hours: 10:00am-10:00pm (Last Order 9:30pm), [Lunch] 11:00am-2:00pm (closed when sold out) Closed: Tuesdays Address: 1-7-3 Megumino-nishi, Eniwa (+81)0123-36-3016 Parking space: For 5 vehicles

04 Hana Café Carrot

Cafe Sweets Bread Ice Noodle



This coffee shop specializes in home-roasted specialty coffee.

This café is where Daisuke Uchikura, a certified coffee cupping judge, personally imports and home-roasts specialty coffee beans. They usually have around 20 kinds of beans in the shop. They can also recommend one that could fit you perfectly. Take away drinks are also available.

Opening hours: 10:00am-6:00pm (Last Order 5:30pm) Closed: Wednesdays, Second and fourth Thursdays Address: 1-25-2 Megumino-nishi, Eniwa (+81)0123-36-4561 Parking space: For 10 vehicles

05 JAZZ CAFÉ TOSSY

Cafe Sweets Bread Ice Noodle



An authentic jazz café.

The owner of this jazz café really cares about the sound, furniture, garden, dishes, coffee... and everything about his shop. The amazing amplifier set, custom-made furniture, and rose garden are must-see. Feel the comfortable BGM with all your senses.

Opening hours: 11:00am-4:00pm (Karaoke is available from Monday to Wednesday, Jazz café from Thursday to Saturday) Closed: Sundays, closes irregularly Address: 4-12-3 Megumino-minami, Eniwa (+81)0123-37-0283

06 Tomoe Bagel

Cafe Sweets Bread Ice Noodle



Safe, additive-free bagels baked by a traditional recipe.

The bagels baked by a traditional recipe have a firm outside skin and chewy bread inside. They use fresh Hokkaido flour and natural yeast, without any additives. Safe and tasty bagels for everyone!

Opening hours: Sundays-Thursdays 10:00am-5:00pm, Fridays-Saturdays 10:00am-10:00pm Closed: Obon holidays, the end and the beginning of a year Address: 2-2-12 Megumino-nishi, Eniwa (+81)0123-21-9129 Parking space: For 2 vehicles

07 Italian Dining Bar Sora

Cafe Sweets Bread Ice Noodle



Fantastic Italian with fine drinks.

This Italian dining bar mainly serves pasta and pizza using homemade tomato sauce. The bartender can make a nice cocktail for you, or if you feel a little fancy, the owner can select the perfect wine to pair with your meal.

Opening hours: 11:30am-2:30pm (Last Order 2:00pm), 6:00pm-11:30pm (Last Order 11:00pm) Closed: Mondays Address: Fuji plaza building 2F, 2-2-14 Megumino-nishi, Eniwa (+81)0123-36-1234 Parking space: For 8 vehicles

08 Morimoto Megumino shop

Cafe Sweets Bread Ice Noodle



Take some out for you or bring some to your friend! All the tasty bread here are made by skilled bakers.

It is one of the best sweets shops and bakeries in Hokkaido. There are always many kinds of original breads on the shelves, all made with local ingredients. The bite-size breads have more than 10 flavors and can be purchased by weight.

Opening hours: 9:30am-7:30pm Closed: Open all year round Address: 2-2-2 Megumino-nishi, Eniwa (+81)0123-37-4181 Parking space: For 15 vehicles

09 Ramen Kouchi

Cafe Sweets Bread Ice Noodle



A variety of ramen that range from the standard fare to unique ones.

This ramen shop is known for its straight, medium-thick noodles and quality soup. The Curry Ramen is served in a unique square-shaped bowl. Also, the tender cha-siu (roasted pork) is highly recommended.

Opening hours: Weekdays 11:00am-2:30pm, Saturdays, Sundays, National Holidays 11:00am-3:00pm Closed: Wednesdays, Third Thursdays every month, the end and the beginning of a year Address: 3-7-13 Megumino-nishi, Eniwa (+81)0123-36-6664 Parking space: For 5 vehicles



SHIMAMATSU AREA

01 Yogo Farm

Cafe Sweets Bread Ice Noodle



Tomato flavor soft serve ice cream at a spacious farm.

This farm allows visits to enjoy an open air barbecue. Eniwa Genghis Khan (grilled lamb) and fresh vegetables taste even better when eaten in nature. The soft serve ice cream made with homemade tomato paste tastes rich and creamy. It is a must-have here!

Opening hours: 10:00am-5:00pm (check-in accepted only in the morning) Closed: The end and the beginning of a year Address: 323 Hoei, Eniwa (+81)0123-37-2774 Parking space: For 50 vehicles

02 Raamenya

Cafe Sweets Bread Ice Noodle



This popular ramen shop has many regulars.

Many people become regulars of this shop because of its exquisite soup. Among the various ramen, "Shoyu (soy sauce) Ramen" and "Kuro (black) Ramen" are the most popular ones.

Opening hours: 11:00am-1:20pm, 5:00pm-7:20pm Closed: Tuesdays, Wednesdays Address: 1-12-20 Shimamatsunakamachi, Eniwa (+81)0123-36-2090 Parking space: For 2 vehicles

03 Kisoba Goro

Cafe Sweets Bread Ice Noodle



Outlet Curry Soba changes its flavor as you eat.

This soba restaurant offers various dishes on its menu. The most popular is the "Outlet Curry Soba". You can taste the soup first, and as the curry mixes in, it creates a good harmony of flavors.

Opening hours: 11:30am-2:00pm, 5:00pm-9:00pm Closed: Sundays Address: 2-1-14 Shimamatsunakamachi, Eniwa (+81)0123-36-8125

04 Soft Ice Cream Workshop LuLu

Cafe Sweets Bread Ice Noodle



The soft serve ice cream made from milk produced in Eniwa. Try it with homemade berry sauce!

The most popular soft serve ice cream is one with a mixed berry sauce, made from haskap berries, blueberries, and strawberries harvested on their own farm. Handmade donuts and pasta are also available.

Opening hours: Summer Weekdays 11:00am-6:00pm, Saturdays, Sundays, National Holidays 10:00am-6:00pm, Winter 11:00am-5:00pm Closed: Closes irregularly Address: 275 Nishi-shimamatsu, Eniwa (+81)0123-37-5110 Parking space: For 30 vehicles

05 Café Tea's Garden

Cafe Sweets Bread Ice Noodle



The garden and café where you can experience the season with your eyes and palate

Have some seasonal dishes and sweets while enjoying the garden view. Over ten kinds of dishes using locally produced vegetables are served for the buffet style lunch. Vanilla soft serve ice cream is also popular here.

Opening hours: 10:00am-5:00pm Closed: Thursdays, Winter (from the middle of December to the end of March) Address: 561-4 Nishi-shimamatsu, Eniwa (+81)0123-36-8050 Parking space: For 50 vehicles

06 Michi-to-kawa-no-Eki Hana Road Eniwa

Cafe Sweets Bread Ice Noodle



This popular bakery sells freshly baked bread using ingredients produced in Eniwa.

The most popular breads here are "Pumpkin Pudding Bread" and "Pumpkin Melon Bread", both of which use pumpkins from Eniwa. This place is always lively with customers.

Opening hours: From April to October 9:00am-7:00pm, From November to March 9:00am-5:30pm Closed: The end and the beginning of a year Address: 817-18 Minami-shimamatsu, Eniwa (+81)0123-37-8787 Parking space: For 94 ordinary-sized vehicles, 20 large vehicles

The secret of delicious Eniwa

Eniwa City has a wide range of excellent cafes, sweets shops and restaurants. The farmers' market "Kanona" sells a variety of agricultural products. Why is Eniwa so blessed like this? One of the reasons is that it has fertile soil nourished by underground water from Lake Shikotsu. Another reason is the devoted producers, such as those who dedicate themselves to organic farming for top grade food safety. Many premium restaurants and chefs in nearby Sapporo, the Hokkaido prefectural capital, have also acknowledged the high quality farm products in Eniwa. Come and taste the essence of Eniwa.



ENIWA EYE <https://eniwa-eye.com/en/>

ENIWA EYE is the website that we, the residents of Eniwa, provide information about Eniwa through our photos and movies. Let us show you the charm of Eniwa and the picturesque sightseeing spots around our city.

